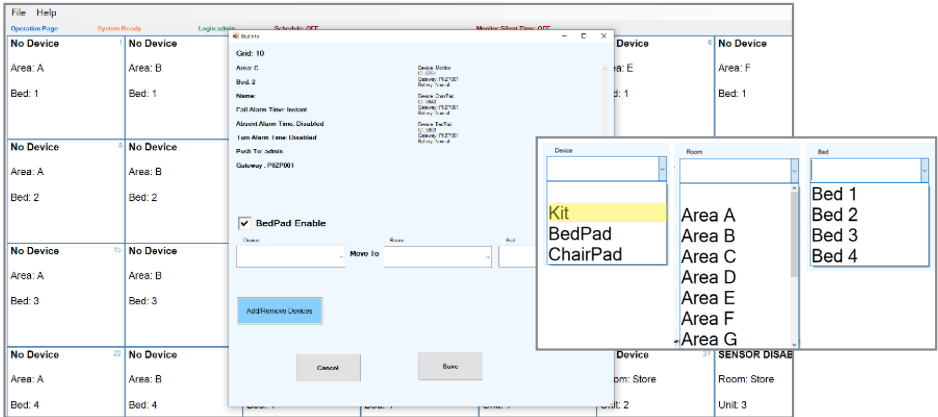


# How to move a SET



## MOVE SET TO CORRECT BED PLACE:

- 1. DOUBLE TAP THE TILE WHERE THE CURRENT SET IS AND A POP-UP BOX WILL APPEAR.**
- 2. TAP ARROW ON SIDE OF THE DROPPDOWN BOX FOR “DEVICE”. IT IS IMPORTANT THAT YOU ALWAYS SELECT “KIT” FROM THIS DROPPDOWN (EVEN IF YOU ARE ONLY MOVING A SINGLE BED OR SEAT SENSOR PAD).**
- 3. TAP ARROW AT THE TOP OF THE OTHER TWO DROPPDOWN BOXES TO SELECT THE DESIRED “ROOM” AND “BED” LOCATIONS.**
- 4. TAP SAVE.**

**T:** +44 (0)28 9448 3971  
**E:** sales@ramblegard.com  
**W:** www.ramblegard.com

